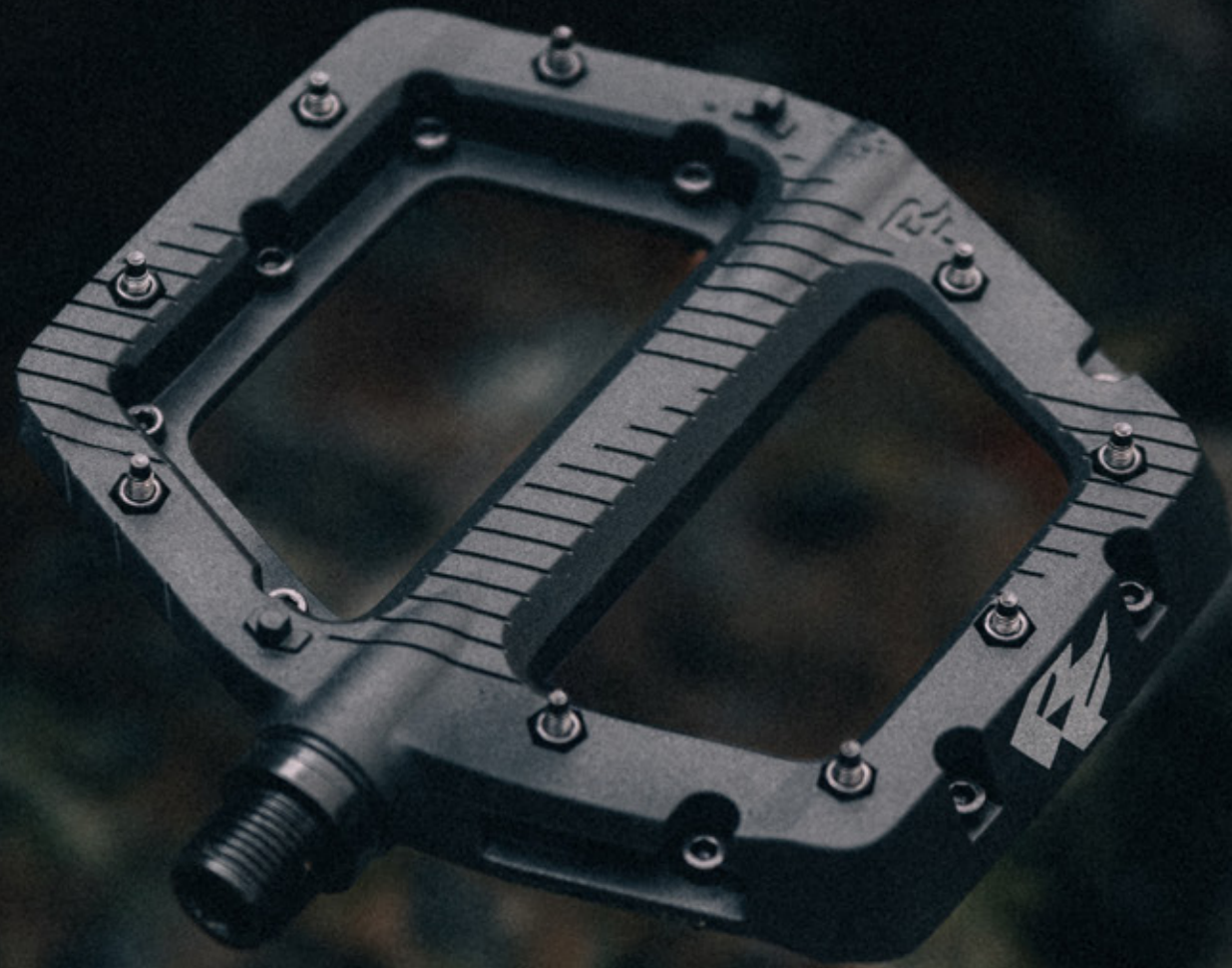


Chester Pedal

**ON TOP.
AGAIN.**



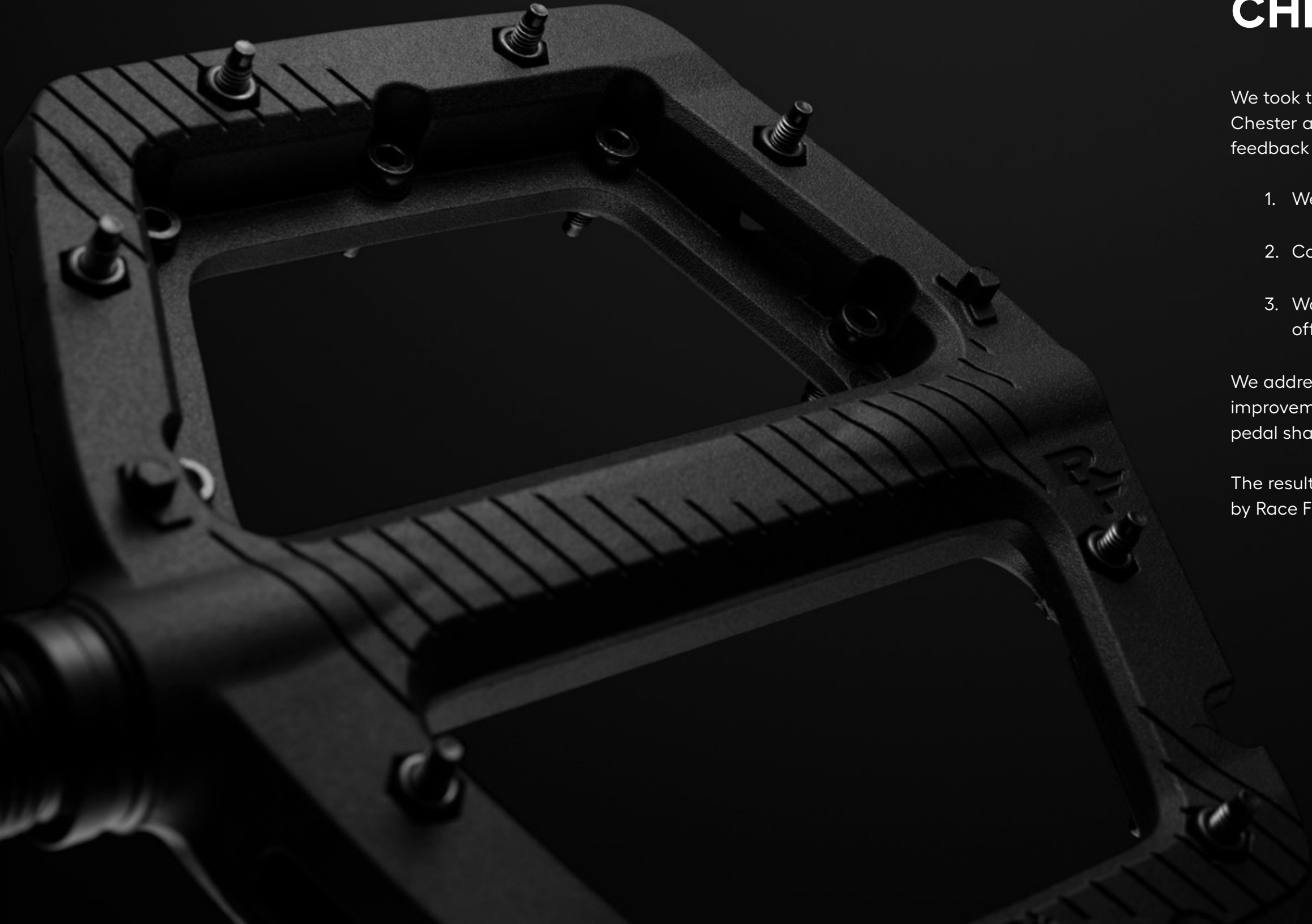
**RACE
FACE**



REFRESH OF AN ICON.

Chester pedals have long been a staple in the Race Face lineup with a leading reputation as the affordable—yet high-quality—composite pedal. Durable, comfortable and available in a gamut of colours, Chester was the premier pedal choice for bike shop employees outfitting a customer's new bike. This caught the attention of our competition, who have released new or updated composite pedals in an attempt to knock Chester from the top spot.

After years of service to riders of all levels, Chester was due for an update. We wanted a pedal with better ride feel, more size options and updated aesthetics. A pedal that would exceed the expectations of novice and die-hard composite pedal riders alike.



(R)E-MEET CHESTER.

We took the learnings from the original (and venerable) Chester and set out to solve the rider's pain points. Rider feedback told us that our pedals:

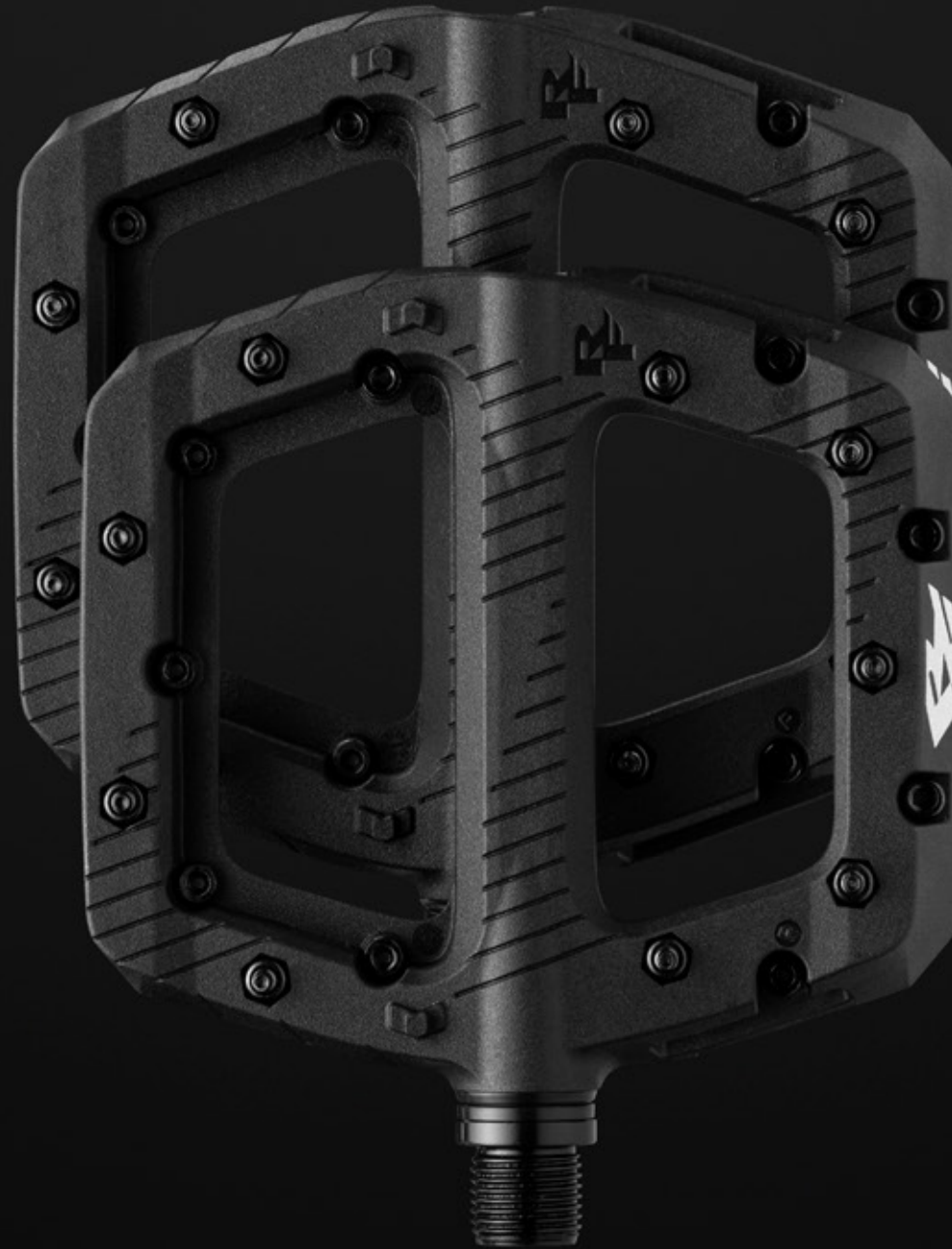
1. Were too convex
2. Could've used more grip
3. Would benefit more riders if we offered it in multiple sizes

We addressed these pain points—and made additional improvements—by considering the following factors; pedal shape, platform size, pins and Q-factor.

The result? The best darn composite pedal ever made by Race Face.

WHAT'S NEW WITH CHESTER?

- 1. Pedal shape** – Our previous iteration had a bulge in the center of the pedal platform to house the pedal spindle. Many composite pedals need more material in this area to achieve desired strength (aluminum is stronger and requires less metal to achieve the same strength). The drawback of the bulge is an insecure, convex feel. With the new Chester, we slimmed down the spindle housing without compromising strength, almost eliminating the bulge entirely and resulting in a more concave and secure feel.
- 2. Platform size** – We made the new Chester in two sizes, Small (105 x 100mm) and Large (115 x 110mm) to better suit the needs of all riders. Platform size is largely a matter of rider preference, but we found a rough correlation to shoe size, as seen in the chart below. (The previous Chester pedals came in one size, measuring 110 x 101mm.)



- 3. Pin placement, type and quantity** – Chester now has nine metal pins and two molded plastic pins for a total of 11 pins per pedal side (three more than previous model). The pins were strategically placed for more consistent grip around the entire pedal circumference and a more concave feel. The metal pins also have smaller, threadless tips, which improves grip and lets riders reposition their feet as needed. Threadless pin tips also make pin removal easier for when riders inevitably replace them, as well as making the pins less damaging to skin in the event of a “shinner.”
- 4. Q-factor** – We eliminated the wrench flats from the pedal spindle to reduce Q-factor, meaning the rider’s feet will sit closer to the cranks. Riders can now improve ride ergonomics with a simple pedal swap.

Size (US)	5	6	7	8	9	10	11	12	13	14	15	
Size (US)	6	7	8	9	10	11	12	13	14	15	16	
	Medium Pedal						Large Pedal					

Better pins, and more of them.

11 pins per side – improved placement, better grip, easy foot-adjust, less shin-damage

Updated pedal shape.

For better shoe-pedal contact, and a secure concave feel

Available in Small and Large platform sizes.

Small – 105 x 100mm

Large – 115 x 110mm

16mm platform height.

Fully rebuildable and serviceable internals.

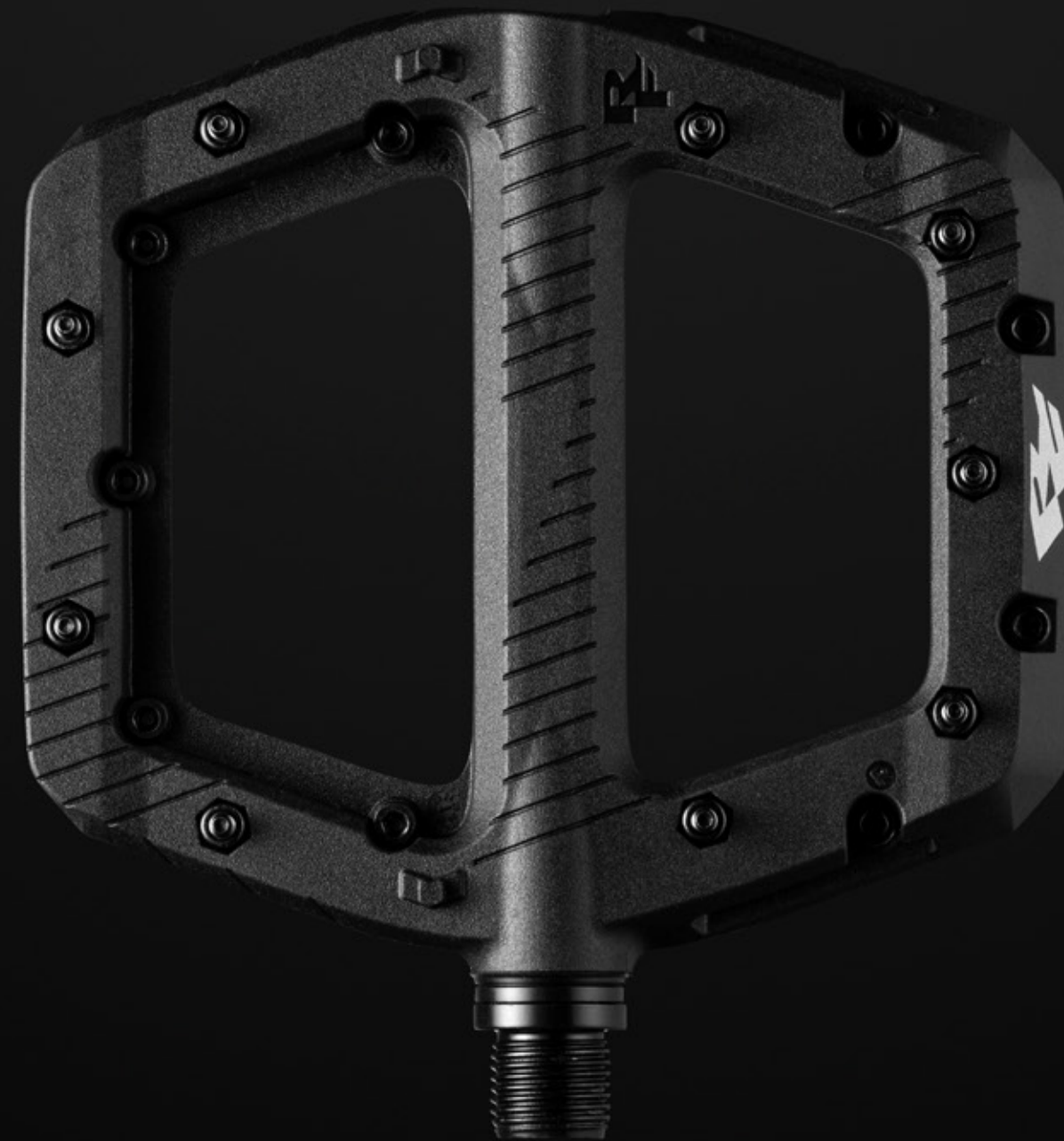
Eight color options.

Black / Red / Orange / Green / Turquoise / Blue / Purple / Magenta

Lightweight

Small pair – 345g

Large pair – 355g



Refreshed look.

Glass-filled nylon body with in-mold graphics

Black spindle with 8mm hex interface.

For improved aesthetics and easier installation

No more wrench flats – reduced Q-factor.

No wrench flats on the pedal spindle mean better pedaling ergonomics

Race Face Lifetime Warranty. Crashes included.

These composite pedals won't break, but are covered for consumer peace of mind



Lifetime Warranty

— Crashes Included —

**RACE
FACE**

RaceFace.com

© 2014 RaceFace, Inc. All rights reserved.